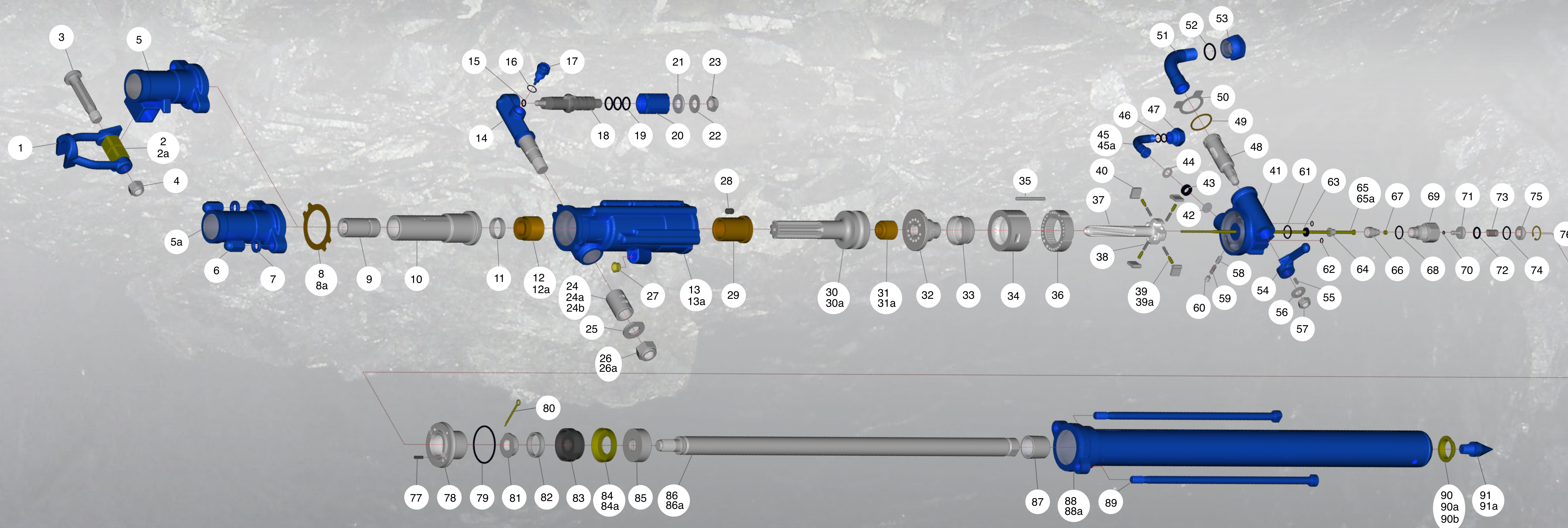
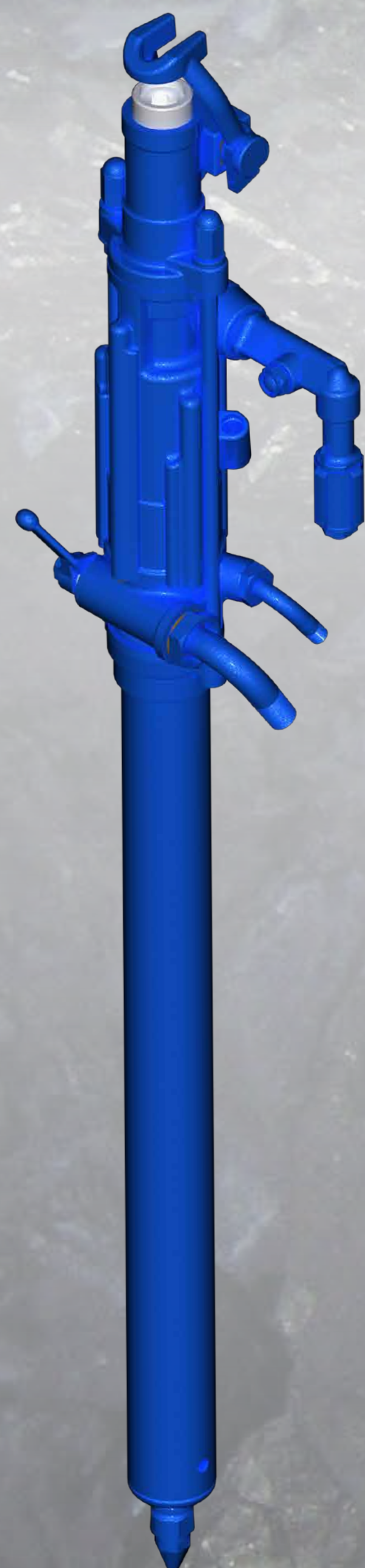


STOPER DRILL MODEL 260B



INTERNATIONAL • ROCK DRILLS



MADE IN CANADA
CANUN INTERNATIONAL

2896 Belisle Drive, Val Caron, Ontario, Canada P3N 1B3
Tel: 705-897-0400 Toll: 1-800-461-6226 Fax: 705-897-3250

An ISO 9001: Registered Company
www.canun.com



REF	PART NO.	QTY	DESCRIPTION
1	A699	1	Steel retainer
2	1358164	2	Buffer
2a	D6205M	2	Buffer c/w spacer
3	C6908	1	Steel retainer pin
4	12812UF	1	Nut
5	A2598A	1	Front head
5a	A1034	1	Standard Fronthead
6	D1388D	2	Side rod nut
7	D2154	2	Side rod washer
8	NB500C	1	Copper gasket
8a	NB500P	1	Plastic gasket
9	C1418A	1	Chuck bushing 7/8
10	B1178	1	Chuck (includes C1516)
11	C1516	1	Chuck washer
12	C1512	1	Chuck nut
12A	12146	1	Chuck nut 6 spline
13	E394	1	Cylinder
13A	E394M	1	Cylinder (muffled)
14	B1194	1	Operating handle adapter
15	164311	1	"O" ring
16	164221	1	"O" ring
17	D1433	1	Feed release valve
18	B1193A	1	Operating handle control body
19	164921	3	"O" ring
20	C1570	1	Operating handle twist grip
21	D1989	1	Operating handle washer
22	D2014	1	Operating handle lockwasher

REF	PART NO.	QTY	DESCRIPTION
23	D1990	1	Operating handle lock nut
24	C2549	1	Cylinder lug bushing
24A	C2549A3	1	Cylinder lug bushing oversize .003
24B	C2549A5	1	Cylinder lug bushing oversize .005
25	D1453	1	Adapter nut washer
26	D1454	1	Adapter nut
26A	D1454D	1	Adapter nut (Dome)
27	NB739	2	Exhaust plug
28	D2105	1	Cylinder plug
29	C1517	1	Front cylinder liner
30	B2334	1	Piston (8 spline)
30A	11116S	1	Piston (6 spline)
31	C1508	1	Rifle nut
31A	7599G	1	Rifle nut (small) (use with 11116s)
32	A744	1	Valve plug
33	C1648	1	Valve
34	A745	1	Valve box
35	D1397	1	Valve box locating pin
36	B1170	1	Ratchet ring
37	B1173R	1	Rifle bar (reversible)
38	D1611C	4	Pawl spring
39	NB805	4	Pawl plunger
39A	S21-34	4	Steel plunger
40	D1381R	4	Pawl (reversible)
41	A705	1	Backhead
42	C1272	1	Waterinlet screen
43	D1402	1	Water inlet washer

REF	PART NO.	QTY	DESCRIPTION
44	S2487	1	Water stem thrust washer
45	C1809	1	Water Stem
45A	C1528	1	Water stem (serrated)
46	164811	2	"O" ring
47	S2141	1	Water stem nut
48	B1176S	1	Throttle valve
49	D1601	1	Air bend nut washer
50	12153	1	Air bend nut lock washer
51	C1525	1	Air bend
52	164731	1	"O" ring
53	C1526	1	Air bend nut
54	C1509S	1	Throttle valve handle
55	D1384	1	Throttle valve key
56	149163MT	1	Disc spring washer
57	D1385	1	Throttle valve handle nut
58	D1383	1	Throttle valve plunger
59	D1382	1	Throttle valve spring
60	2422P	1	Plug
61	164231	1	"O" ring
62	164701	2	"O" ring
63	D1675	1	Water tube seal
64	D1674	1	Water tube spacer
65	C1574A	1	Water tube
65A	C1574B	1	Water tube 1/8 hole
66	C2144	1	Water valve seat retainer
67	D1673	1	Water valve seat
68	164231	1	"O" ring
69	B1181PC4	1	Water control valve body

REF	PART NO.	QTY	DESCRIPTION
70	164301	1	"O" ring
71	C1522PC1	1	Water valve
72	164521	1	"O" ring
73	D1406	1	Water valve spring
74	164231	1	"O" ring
75	C1521PC1	1	Water valve cap
76	20015	1	Circlip
77	300M620	1	Pin
78	B1583	1	Backhead cap
79	164671	1	"O" ring
80	225414	1	Split pin
81	D1665	1	Piston rod lock nut
82	D1664	1	Piston rod spring clip
83	C2213	1	Bucket spacer
84	17970385	1	Bucket
84A	17970385M	1	Bucket (soft)
85	C2214	1	Piston rod spacer
86	B1656	1	Piston rod 30" stroke
86A	B1659	1	Piston rod 24" stroke
87	D1707	1	End cap bushing
88	B1654	1	Feed cylinder 30" stroke
88A	B1657	1	Feed cylinder 24" stroke
89	C1582	2	Side rods
90	1973854	1	Hot packing
90A	1973854A	1	Hot packing - double lip
90B	1973854B	1	Hot packing - double packing
91	D2457	1	Spike (long)
91A	D1641	1	Spike (short)